

VASEY BRIGHTON EAST



ABOUT THE BRIGHTON EAST AREA

Located in leafy Brighton East, the new facility is 13km south-east of Melbourne, close to spacious parklands and the Bay's beaches. Hurlingham Park and Landcox Lake Park, both within 500 metres of the site, are natural green areas offering open spaces, picnic facilities, bird life, manicured gardens and wide level paths for easy wheelchair access. The Heritage-listed St John the Less Anglican Church is located within the facility grounds and a local Uniting Church is situated on Hawthorn Road, 100 metres to the south.

There are two neighbourhood shopping precincts close by. The closest is 300 metres to the south and includes a supermarket, hairdressers, café, restaurant, milk bar, newsagency, chemist and bank. 600 metres to the north, the second shopping precinct includes a dry cleaners, beautician, supermarket, chemist and petrol station. Both shopping precincts are a short direct tram ride.



A NEW LEVEL OF EXCELLENCE IN AGED CARE

LOW CARE • HIGH CARE • DEMENTIA



To find out more about Vasey RSL Care's Brighton East facility, call **03 9818 0568** or visit our website at www.vaseysrlcare.org.au



ABOUT OUR BRIGHTON EAST FACILITY

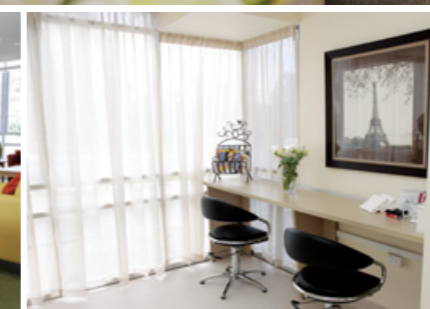
Conveniently located at the junction of Hawthorn Road and Union Street, Vasey RSL Care's Brighton East Facility represents the very highest standards in aged care. Seven years in design and development, it is now a state of the art aged care facility with 128-beds offering low care (hostel), high care (nursing home) and dementia care.

RESPECTING AGED CARE AT BRIGHTON EAST

The facility has been designed with the benefit of Vasey RSL's long commitment to ensuring respect is a key component of all our facilities and services. Our range of value-added resources helps ensure that all residents enjoy the highest possible levels of dignity, independence, comfort, interaction and support.

These include:

- 128 spacious rooms with private ensuite and flat screen TV;
- Double rooms for couples;
- Each bedroom fully cabled for personal telephone, television and internet;
- Well equipped activities areas promoting leisure and social interaction in a relaxed environment;
- On-site hairdressing salon;
- Spacious dining areas for residents and private dining room for family celebrations;
- A number of comfortable lounge rooms with large screen TV and Foxtel;
- Extensive gardens and terracing;
- BBQ area, walking paths and seating areas;
- Heritage-listed church on the site;
- On site visitor car parking;
- Immediate access to public transport;
- Environmentally friendly building.



ABOUT VASEY RSL CARE

Our history of providing high quality aged care goes back many years with origins in the War Widows' Guild and the RSL (Victorian Branch) respectively, both long-standing organisations were well respected within their communities and as aged care providers.

Both Vasey and RSL Care grew from a service background and began operations through the provision of independent accommodation, moving into residential aged care in response to the changing needs of war widows and veterans. This ability to be responsive and adaptable also facilitated the further development of community programs.

Today, accommodation is offered as a priority to war widows and veterans, with applications from the general public most welcome.